

Sheeting & Matting

Sheeting & Matting

Industry & Wear Resistant

www.trelleborg.com/fluidhandling

TRELLEBORG GROUP LEADER IN POLYMER SOLUTIONS

Trelleborg is a world leader in engineered polymer solutions that seal, damp and protect critical applications in demanding environments. Its innovative engineered solutions accelerate performance for customers in a sustainable way.

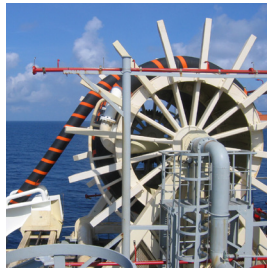
Trelleborg Fluid Handling Solutions is a key supplier focusing on fluid handling technologies as well as material protection in demanding areas. With over 1,500 employees, located in Europe, Turkey, Australia and China.

The Trelleborg Fluid Handling team provides high performance solutions for oil and gas transfer for marine applications, fluid handling systems in the industrial applications and full material and equipment protection in the mining industry.

Trelleborg Fluid Handling Solutions develops, designs, manufactures low and medium pressure hoses with their fittings, oil & gas marine break-away couplings and hoses, filtration for LNG and industrial applications, rubber sheeting and matting, expansion joints and wear protection lining equipment based on advanced polymer technology.



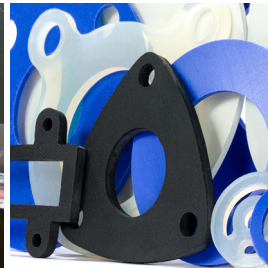
Industrial hoses



Oil & Gas hoses



Expansion joints



Rubber sheeting and matting



Mining & mineral processing

With Trelleborg's material expertise and industry insight into cutting-edge areas with rigorous requirements, such as the aerospace and automotive industries, as well as healthcare & medical, the Group is creating the sustainable industrial solutions of today, shaped by such trends as electrification, digitalization, industrial automation and new sustainable materials.

The solutions save energy and reduce CO2 emissions, eliminate noise and vibrations, and dramatically extend the lifecycles of machines and medical devices as well as skyscraper facades.

The Trelleborg Group has set ambitious science-based climate targets for its own operations, aiming for net zero emissions by 2035. Resource efficiency and circularity are becoming part of Trelleborg's DNA.

**PROTECTING
THE ESSENTIAL**



Seal, damp and protect

Trelleborg rubber sheeting and matting range is suitable for most areas of use. Main applications are sealing (gaskets), protection (machine and process), safety (electric insulation, fire/smoke) and flooring (industrial matting).

We invest heavily in R&D. Our sales staff, chemists and engineers work to find better solutions for customers through continuous development of new materials, composites, designs and production methods.

Certificates are available under request (food quality, drinking water, dielectric, fire and smoke resistance).

Our factory is certified ISO 9001, ISO 14001 and ISO 45001.

Trelleborg rubber sheeting and matting range is especially designed for:

- Chemical** (acids, bases, oils)
- Energy** (electrical insulation acc. EN-60243-2, IEC 61111, fire protection)
- Mass transit** (EN-45545-2 + A1:2016 regulation)
- Food** (FDA and (EC) 1935/2004 certificates)
- Drinking water** (several certificates as ACS, WRAS, BELGAQUA, AS/NZS, etc.)
- Steel industry** (high temperature)
- Automotive** (IMDS, sheeting for gaskets and strips)
- Construction & environment** (fire/smoke matting, bearings)
- Mining & quarries** (skirting, dust sealing)



Standard manufacturing dimensions and tolerances

Thickness (mm)	Thickness tolerance (mm)	Width (mm)	Length (m)	Thickness (mm)		
		Industrial		Wear resistant		
1	± 0.2	1400 ± 2 %	20 ± 2 %	20 ± 2 %	1	
1.5	± 0.25		15 ± 2 %	15 ± 2 %	1.5	
2	± 0.3		10 ± 2 %	10 ± 2 %	10 ± 2 %	2
3						3
4	± 0.4		5 ± 2 %	5 ± 2 %	5 ± 2 %	4
5						5
6	± 0.5		5 ± 2 %	5 ± 2 %	5 ± 2 %	6
8	± 0.7					8
10	± 1.0		5 ± 2 %	5 ± 2 %	5 ± 2 %	10
12						12
15						15
20	± 1.4		5 ± 2 %	5 ± 2 %	5 ± 2 %	20
25	± 1.75					25
30/40	± 2.0			2.5 ± 2 %	2.5 ± 2 %	30/40

Due to Production reasons, it is not always possible to supply the exact ordered quantities or the exact lengths. Consequently, the quantity delivered and invoiced can change by ± 10% of the quantity requested or/and a maximum of 10% of the ordered rolls can be supplied in short lengths at the same price (minimum one roll). For further information check our General Conditions of Sale.

The technical data shown on this brochure is taken from our TDS at the date of printing, errors and omission excepted. In the event of disparity, the values on the TDS are available on our website (www.trelleborg.com/fluidhandling).

Industrial sheeting

The solution for any sealing or protection problem, even in the most demanding industrial environments.

			Color	Density (g/cm ³)	Hardness (Shore A)	Tensile strength (MPa)	Elongation at break (%)	Working temperature (°C)	Diluted acids and bases	Concentrated acids and bases	Ozone	Oils and hydrocarbons	
EPDM													
<p>Excellent ageing properties (heat, ozone, weathering).</p> <p>Good resistance to acids, bases, solvents and steam.</p> <p>Remains flexible at low temperature.</p> <p>Not resistant to hydrocarbons and fat products.</p>	Standard level quality	EF51	●	1.30	65	5	200	-25 + 120	●	●	●	●	
	Fire EN-45545-2 compliance	E527	🔥	●	1.45	70	7	400	-30 + 100	●	●	●	●
	White food quality	E569	🍷	○	1.27	60	8	350	-40 + 115	●	●	●	●
	Drinking water - WRAS certification	E645	🚰	●	1.15	70	12	400	-40 + 120	●	●	●	●
	Technical applications 50 Shore	E550	●	1.17	50	9	450	-40 + 115	●	●	●	●	
	Technical applications 60 Shore	ES02	●	1.22	60	10	500	-40 + 120	●	●	●	●	
	Technical applications 70 Shore	ES01	●	1.31	70	7	300	-40 + 120	●	●	●	●	
	High temperature applications	ES03	●	1.24	70	10	300	-40 + 150	●	●	●	●	
CR (Polychloroprene)													
<p>Good mechanical and physical properties, low compression set values and good bending.</p> <p>Very good resistance to weathering, ozone and UV.</p> <p>Good resistance to diluted acids, alifatic solvents, oils and petroleum based products.</p>	Standard level quality	CF49	1P 2P ●	1.40	65	6	250	-25 + 90	●	●	●	●	
	Technical applications 40 Shore	C400	●	1.33	40	4	450	-30 + 90	●	●	●	●	
	Technical applications 50 Shore	C500	●	1.35	50	4.5	400	-30 + 100	●	●	●	●	
	Technical applications 60 Shore	CF03	1P 2P ●	1.40	60	7	250	-25 + 100	●	●	●	●	
	Technical applications 70 Shore	CS40	1P 2P ●	1.45	70	6	300	-20 + 100	●	●	●	●	
	High performance	CF14	●	1.30	60	10	250	-35 + 120	●	●	●	●	
CSM													
Good chemical resistance against acids and bases.	Technical applications 60 Shore	H630	●	1.30	60	9	350	-35 + 125	●	●	●	●	
IIR (Butyl)													
Very good resistance to acids, bases, and steam. Good resistance to animal or vegetable fats and oils. Weathering, ozone and UV resistant.	Technical applications 60 Shore	T620	●	1.27	60	8	400	-40 + 130	●	●	●	●	

Consult the technical datasheet or consult us for any specific application or product in contact with Trelleborg sheeting.

1P 1 ply 2P 2 plies ● Very good ● Good ● Medium ● Non suitable

E645

Black EPDM sheeting for drinking water.

Approved by WRAS as suitable for contact with water for domestic purposes up to 23°C.



EPDM for drinking water

E527

High performance EPDM sheeting. Fire resistant with low and not toxic smoke emission. Halogen-free.

Classified as HL3 R22, R23 & R24 according to European EN-45545-2 + A1:2016 regulation.



Fire resistant EPDM

Industrial sheeting

NR SBR

NR: Natural rubber. Excellent mechanical and dynamic properties, abrasion resistance, resilience and elasticity. Flexible at low temperatures. High elongation and deformation capacity. Not resistant to oils and petroleum based products.

SBR: Alternative to natural rubber.

			Color	Density (g/cm ³)	Hardness (Shore A)	Tensile strength (MPa)	Elongation at break (%)	Working temperature (°C)	Diluted acids and bases	Concentrated acids and bases	Ozone	Oils and hydrocarbons
Basic quality	R608	1P 2P	●	1.50	65	4	200	-25 +70	●	●	●	●
Standard level quality	RF48	1P 2P	●	1.35	65	4	200	-25 +70	●	●	●	●
White standard level quality	R661		○	1.67	68	5	220	-25 +70	●	●	●	●
White food quality natural rubber	R642	☯	○	1.40	65	10	600	-45 +80	●	●	●	●
High performance natural rubber	R490		●	1.05	45	16	600	-40 +85	●	●	●	●
High performance natural rubber	R499		●	1.00	43	25	650	-40 +85	●	●	●	●

NBR

Excellent resistance to oils, fats, petroleum based products and organic solvents.

Low resistance to weathering, ozone and UV.

Standard level quality	BF50	1P 2P	●	1.35	65	5	300	-25 +90	●	●	●	●
White food quality	B571	☯	○	1.44	65	10	500	-35 +110	●	●	●	●
Blue food quality	B572	☯	●	1.44	65	10	500	-35 +110	●	●	●	●
Technical applications 50 Shore	BS11		●	1.20	50	8	450	-30 +110	●	●	●	●
Technical applications 60 Shore	BS33		●	1.28	60	10	350	-25 +110	●	●	●	●
Technical applications 70 Shore	BS08		●	1.30	70	10	250	-30 +100	●	●	●	●
For transformer oil	BF31	☯	●	1.30	70	13	300	-40 +130	●	●	●	●

Viton™ (FKM)

Excellent chemical resistance.
Excellent resistance to very high temperatures.
Good mechanical and physical properties.

High technical applications	V733		●	1.85	70	7	220	-20 +250	●	●	●	●
Green food quality	V735	☯	●	1.83	78	10	200	-20 +250	●	●	●	●

Silicone

Excellent working temperature range and ageing properties.

Straightforward handling (no talc).

Red food quality	CORALSIL	SR	☯	●	1.20	60	10	500	-60 +230	●	●	●
Transparent food quality	DIAMONDSIL	ST	☯	○	1.20	60	10	500	-60 +230	●	●	●
Blue food quality	SAPPHIRESIL	SB	☯	●	1.20	60	10	500	-60 +230	●	●	●
Metal Detectable	MAGNETSIL	SMD	☯	●	1.30	60	8	300	-60 +230	●	●	●

Consult the technical datasheet or consult us for any specific application or product in contact with Trelleborg sheeting.

1P 1 ply 2P 2 plies ● Very good ● Good ● Medium ● Non suitable

FOOD GRADES

Food grade rubber sheeting meeting European (EC) n° 1935/2004 and 2023/2006 regulations. The material is also in compliance with FDA 21 CFR Part. 177. Indirect Food Additives: Polymers. Sec 177.2600 Rubber articles intended for repeated use (American legislation). Furthermore, these materials contain no phthalate and no bisphenol A, and are free of Animal Derived Ingredients (ADI free). Check the Food Grade symbol on this brochure to discover our food grade qualities. Further information on our Technical Data Sheets.







Meeting (EC) 1935/2004
& FDA Classification

Wear resistant sheeting

Sand and gravel quarries, steel industry, foundries, metal industry, aggregate and cement industries, concrete plants, sawmills, food and pharmaceutical industry, agriculture, sewer cleaning, industrial waste and road maintenance.



High wear sheeting			Rubber compound	Color	Option (bonding layer)	Density (g/cm ³)	Hardness (Shore A)	Tensile strength (MPa)	Elongation at break (%)	Abrasion (mm ³)	Working temperature (°C)		
	Fine grain size material (dry or wet conditions)	REDFINE +	NR R397	●	BL	0.95	35	25	700	60	-40 +80		
	Round grain material	BLACKROCK +	NR R650	●	BL	1.12	60	20	500	80	-50 +85		
	Crushed material	ARMURITE	NR RF20	●	BL	1.12	65	25	450	100	-40 +70		
Medium wear sheeting													
	Fine grain size material (dry or wet conditions)	REDFINE/YELLOWFINE	NR R492/NR R491	●	●	BL	1.05	45	16	600	80	-40 +85	
		BLACKFINE	NR R353	●			1.00	40	20	650	80	-40 +70	
		GREYFINE	NR R488		●			1.05	40	16	600	80	-40 +85
		WHITEFINE 	NR R320		○			1.00	40	20	600	80	-40 +85
	Round grain material	BLACKROCK	NR R698	●	BL	1.14	60	16	450	120	-40 +85		
Special wear sheeting													
	Fire resistant	BLACKFIRE	CR C738	●			1.47	70	10	250	200	-30 +120	
	Dust sealing	BLACKDUST	NR R431	●			1.03	45	16	600	90	-50 +85	
	Skirting	BLACKSKIRT	NR R439	●			1.18	50	8.5	400	125	-40 +70	
		GREENSKIRT	NR R570	●			1.20	55	13	450	170	-40 +80	
	Scrapers	SANDWICH	NR R698/R492/R698	● / ● / ●			1.15	60/45/60	15	400	130	-40 +85	

TOP LINER

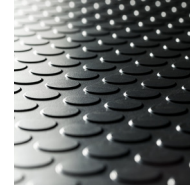
Top Liner is a combination of Trelleborg high wear resistant rubber sheet and an innovative fixing system, patented by Trelleborg. This system saves time and money in maintenance tasks (individual plug-in operation), enhances security (no chemical required) and it is more friendly to people and environment. Gluing or cleaning processes, bolts or welding will be useless since now.



Solutions that save time and money
Solutions that eliminate hazardous tasks

Matting

Vehicles step treads, workbenches, shelves, racks covers, walls, columns, staircases, step stools, car trunks, vessels corridors, halls, corridors, ramps, stairs, elevators in industrial premises, flooring and matting for industrial site (aisles, warehouses, locker rooms).



			Color	Thickness (mm)	Width (mm)	Length (m)
Technical matting (other colors under request)						
CIRCULAR +		Circular studs (MC 2K1)		3/4.5	1000/1200	10
GROOVED +		Wide ribbed M39 (MG)		5	1400	10
CHECKER +		Checker (MK)		3/5	1400	10
OILMAT Oil and hydrocarbon resistant		Circular studs (MC 2K1)		3	1000/1200	10
		Circular studs (MC 7A)		4.5	1000	10
		Checker (MK)		3	1400	10
FIREMAT Fire resistant		Circular studs (MC 2K1)		3	1000/1200	10
ELECMAT Electric insulation EN-60243-2		Fine triangular ribbed (MT)		3/4.5	1000/1200	10
		Wide ribbed M39 (MG)		5	1200	10
		Checker (MK)		3	1400	10
ELECMAT + IEC 61111		Fabric impression		3.2/5	1000/1200	0.6/1/5/10

ELECMAT+

Insulating matting in compliance with IEC 61111 to be used as a floor covering for the electrical protection of workers on electrical installations. Both sides fabric impression finish.



Electrical Insulation

ELECMAT

Insulating matting branded 30KV or 50KV following IEC 60243-1.

Fine or wide grooved or checkered pattern.



Electrical Insulation

FIREMAT

Fire resistant and low, translucent, and non toxic smoke emission. Classified Bfls1, following EN 13501-1.

Circular studs.



Fire resistant matting

BASIC MATTING

We offer the same designs in basic qualities.

Check with our Sales department.

Solutions for every case

Trelleborg is a world leader in engineered polymer solutions that seal, damp and protect critical applications in demanding environments. Its innovative solutions accelerate performance for customers in a sustainable way.

WWW.TRELLEBORG.COM

Scan here to view more product information



Trelleborg Fluid Handling Solutions, Trelleborg Izarra S.A.U.
Tel +34 945 437 000 - izarra@trelleborg.com,
www.trelleborg.com/fluidhandling